



ABOVE: Charis Boos is the new contract Educator for the Navy Museum who gives her first museum tour on the history of the navy to a group of BCT's.



ABOVE: Debbie McKinney showed Charis how the Museum Tour works by giving three different BCT groups a history of the Navy.



ABOVE: The Balloon Artist hired to entertain children during the Torpedo Bay open day was a huge hit.

INTRODUCTION

2009 has started with a real bang.

The Torpedo Bay Open Day we held on Auckland Anniversary Day 2009 was tremendously successful with 1624 people, mostly from the local community and across all age demographics, enjoying the activities available on the day. The visitors were treated to fully interpreted guided and self guided tours throughout the site and buildings, briefings on the new Museum, refreshments including a Lions sponsored sausage sizzle, the Coffee Guy and Mr Whippy, entertainment for the children including face painting, balloons, colouring in and getting a Navy tattoo as well as the very popular Navy Pipes and Drums. Overall the day was very successful with the already strong foundation of support for the Navy Museum steadily growing.

Design work on the Museum buildings is progressing well with the preliminary design stage now completed. The plans for the new Museum are included in this issue of Te Waka for you to look at. I am sure you will agree that both Ken Davis of HMA Architects and Dave Pearson from Dave Pearson Architects our heritage architect on the project have done a great job in both protecting the heritage value of the site and buildings while at the same time providing a very good design concept for the Museum.

The exhibition project team are currently in the conceptual development phase of the exhibition design looking at themes, stories and collections that will best describe the New Zealand Navy to our public. This phase will be completed by the end of February. As part of this phase a series of activities ranging from scheduled discussion groups with museum and Navy personnel have been undertaken. This creates a way of understanding the past and current experiences of people in the Navy to best convey these through out exhibitions.

Over the last several months a fantastic effort has been made by the collections team to catch up with the accessioning and storing of the back log of donated collection items. Over 1100 individual objects and 700 books were accessioned, catalogued and stored during a three month period. This work and the ongoing work evaluating, conserving and preparing the collection will greatly assist the exhibition designers in selecting objects for the new exhibition.

Late 2008 Dr Robin Watt completed the valuation of the collection and we are expecting to see the outcome of that valuation in the next few weeks.

REDEVELOPMENT ACTIVITIES

The main activities to be undertaken over the next month to redevelop the new Museum include;



ABOVE: The Navy Pipes and Drums band gave great support to the Torpedo Bay Open day as well as the recruiting bus, Mr Whippy and the Coffee Guy. Site Tour Below.



ABOVE: Signage was placed all around the Torpedo Bay site informing people of the history of the site.



ABOVE: Michael Wynd was one of many Museum staff members who gave a tour every half an hour at the Torpedo Bay open day.



Museum Building

Over the next three months OPUS International will be undertaking the detailed design stage of the design process. This phase of work sees the preliminary design developed to include all the design features needed to make the Museum work including all the services, air conditioning, security and the like. Detailed design is a long process as every feature of the Museum must be identified, evaluated, designed and detailed both to ensure the feature will work in the new Museum and will perform as required.

Within the next month we are also hoping to submit the outline plan of works to the North Shore City Council

Exhibition

This month we will continue to focus on the concept design of the exhibition. Several focus groups will be held to identify otherwise hidden story's and to bring a personal perspective to the story's. An exhaustive search through the Navy Museums varied collections ranging from war diaries to large guns has also begun. This process involves the selection and evaluation of collection items potentially suitable for inclusion in the exhibition. It is important that the collection items used in the exhibition reflect and represent the concepts and themes the exhibition team have developed.

FINAL NOTE

2009 will be an extremely busy one in the Museum. All the team are actively engaged in some aspect of the planning or work to create the new Museum and it will take "all hands to the pump" to achieve our opening date for the Museum of March 2010.

We look forward to your ongoing support and encouragement throughout 2009.

I trust you will like what you see in the plans for the new Museum.

FEEDBACK

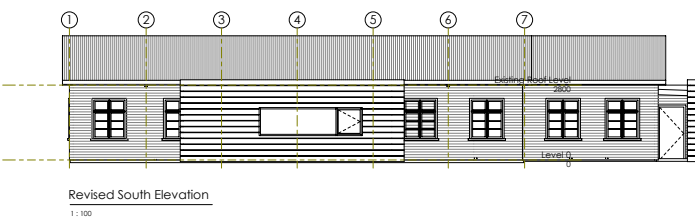
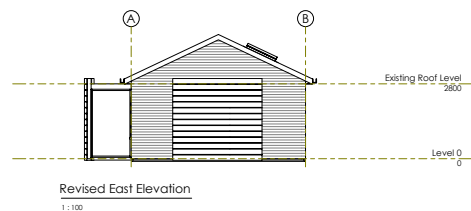
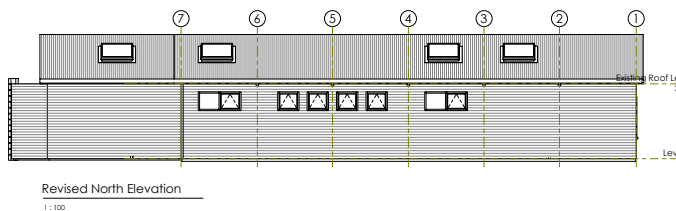
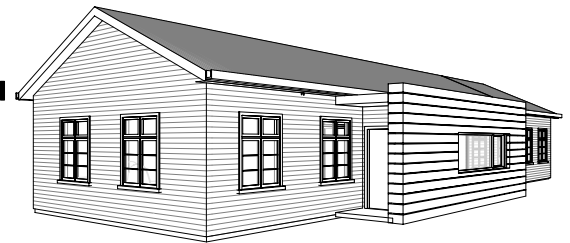
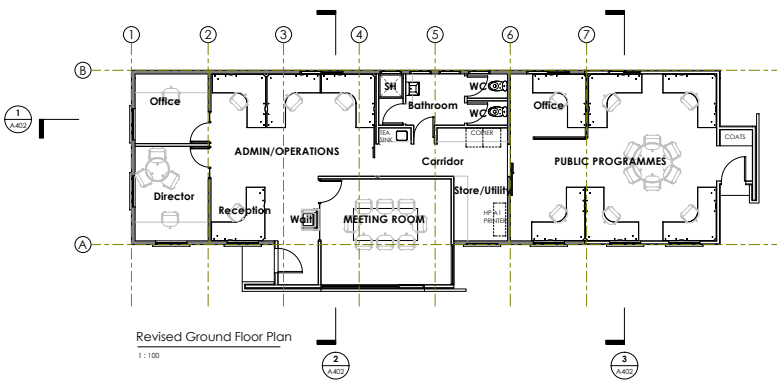
We like to keep you informed of progress on our new museum and if you know of any one else who would also like to receive this newsletter, let us know by email. If you have any other feedback please let us know, it would be great to hear from you.
email: david.wright@nzdf.mil.nz



PRELIMINARY DESIGN

<p>Auckland Office PO Box 5848 Auckland New Zealand Tel: (09) 355 9500 Fax: (09) 355 9585</p>	<p>HERRIOT + MELHUISH ARCHITECTURE LTD NSA PRACTICE WELLINGTON AUCKLAND CHRISTCHURCH</p>	<p>LEVEL 1 21 BLAIR STREET PO BOX 6310 WELLINGTON T: (04) 385-0038 F: (04) 385-0037 WWW.HMA.CO.NZ</p>	<p>Navy Museum</p> <p>Torpeda Bay Devonport</p>	<p>Revised Site Plan</p> <p>Revision</p>
				<p>Drawing Number A101a</p> <p>Date: 26 Nov 2008</p> <p>Scale: @ A2 Scale: @ A4</p>

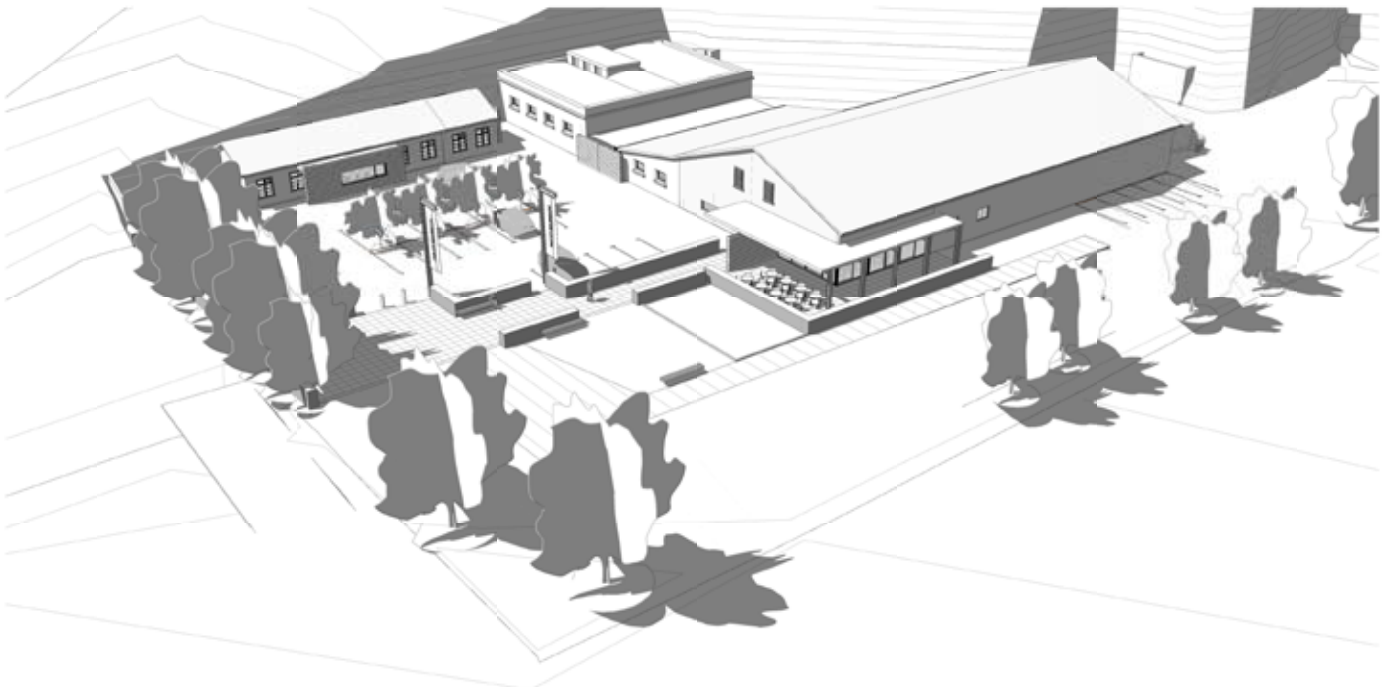
26/11/2008 9:00:15 pm, C:\Navy Museum_2820_14.00 Revit\4.13 Unred Files\Shipwrights Shop.rvt





PRELIMINARY DESIGN

<p>Auckland Office PO Box 5848 Auckland New Zealand Tel: (09) 355 9500 Fax: (09) 355 9585</p>	<p>HERRIOT + MELHUISH ARCHITECTURE LTD NSA PRACTICE WELLINGTON AUCKLAND CHRISTCHURCH</p>	<p>LEVEL 1 21 BLAIR STREET PO BOX 6310 WELLINGTON T: (04) 385-0038 F: (04) 385-0037 WWW.HMA.CO.NZ</p>	<p>Navy Museum</p> <p>Torpeda Bay Devonport</p>	<p>Shipwright's Shop Revised Plan & Elevs</p> <p>Revision 1</p>
				<p>Drawing Number A401</p> <p>Date: 25 Nov 2008</p> <p>Scale: @ A3 Scale: @ A4 1:100</p>

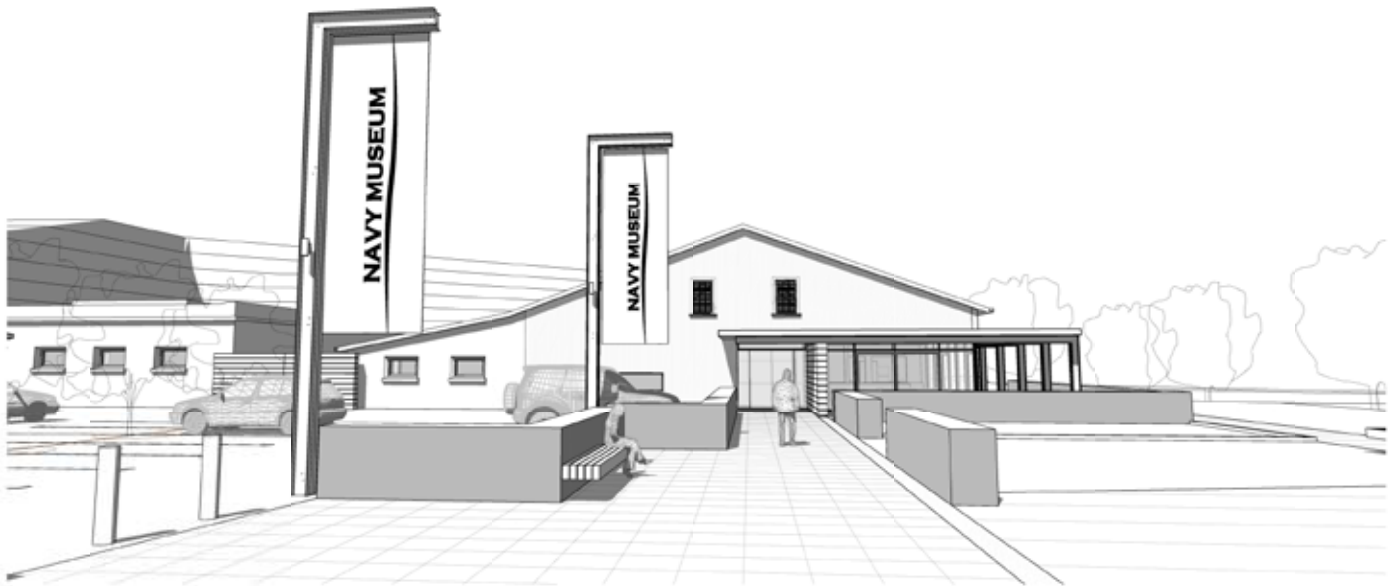
26/11/2008 9:20:30 am, C:\Navy Museum_2820_14.00 Revit\4.13 Unred Files\Shipwrights Shop.rvt





PRELIMINARY DESIGN

 <p>Auckland Office PO Box 5848 Auckland, New Zealand Tel: (09) 355 9500 Fax: (09) 355 9585</p>	 <p>LEVEL 1 21 BLAIR STREET PO BOX 650 WELLINGTON Tel: (04) 385-0038 Fax: (04) 385-0037 www.hma.net.nz</p> <p>HERRIOT + MELHUISSH: ARCHITECTURE LTD NZA PRACTICE WELLINGTON AUCKLAND CHRISTCHURCH</p>	<p>Navy Museum</p> <p>Torpedo Bay Devonport</p>	<p>Site Perspective 2</p> <p>Revision</p> <p>Drawing Number A801</p> <p>Job: 2820 Date: 26 Nov 2008 Scale @ A2 Scale @ A4</p>
---	--	--	--

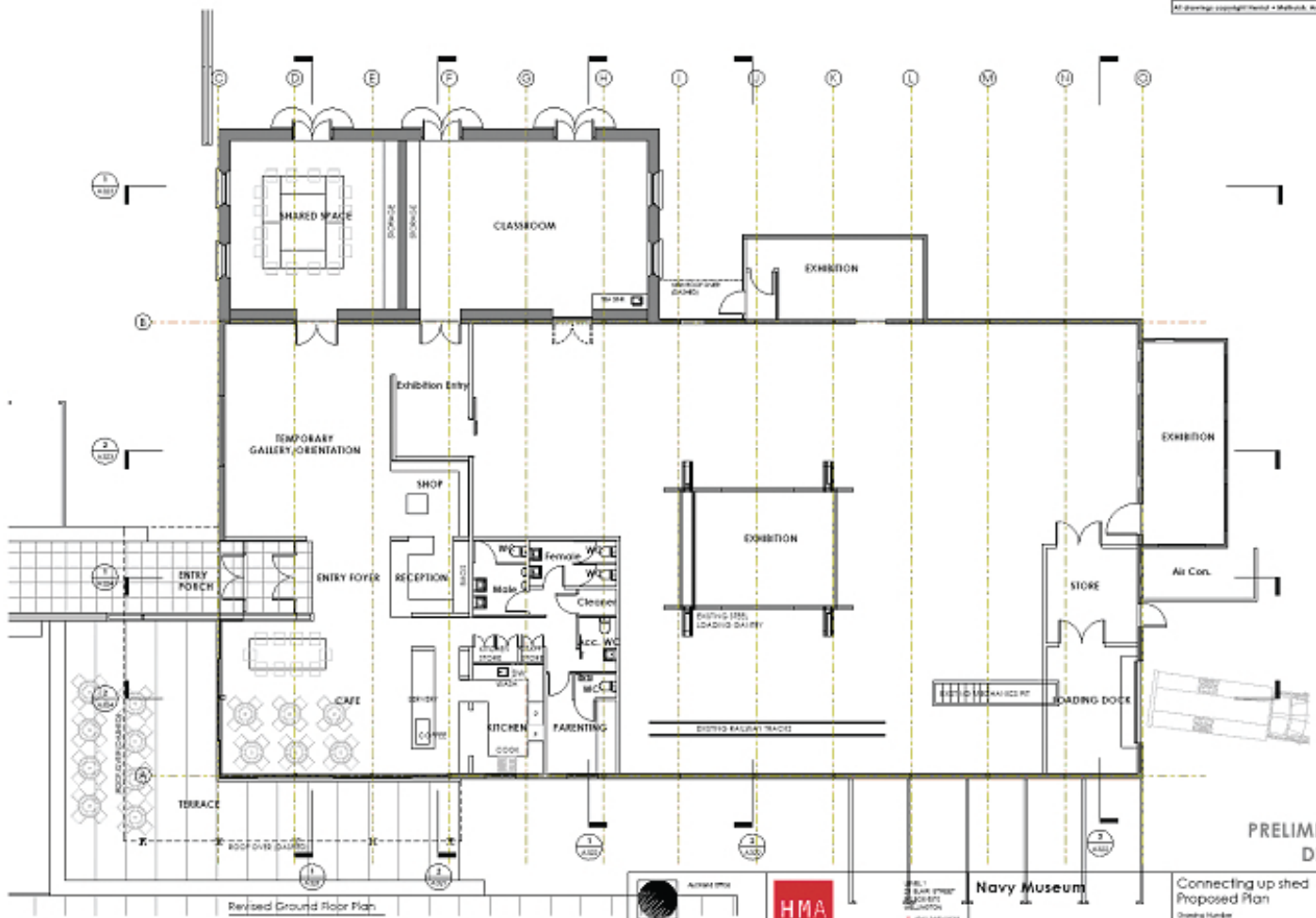
26/11/2008 5:14:20 p.m. L:\Navy Museum_2820\1400 Rev\Navy Museum.rvt



PRELIMINARY DESIGN

 <p>Auckland Office PO Box 5848 Auckland, New Zealand Tel: (09) 355 9500 Fax: (09) 355 9585</p>	 <p>LEVEL 1 21 BLAIR STREET PO BOX 650 WELLINGTON Tel: (04) 385-0038 Fax: (04) 385-0037 www.hma.net.nz</p> <p>HERRIOT + MELHUISSH: ARCHITECTURE LTD NZA PRACTICE WELLINGTON AUCKLAND CHRISTCHURCH</p>	<p>Navy Museum</p> <p>Torpedo Bay Devonport</p>	<p>Site Perspective 3</p> <p>Revision</p> <p>Drawing Number A802</p> <p>Job: 2820 Date: 26 Nov 2008 Scale @ A2 Scale @ A4</p>
--	---	--	--

26/11/2008 5:17:27 p.m. L:\Navy Museum_2820\1400 Rev\Navy Museum.rvt



Revised Ground Floor Plan
1:100

PRELIMINARY DESIGN

<p>ACTING CHIEF Navy Museum PO BOX 804 HARBOR LIGHT DRIVE DUNEDIN TEL: 03-353 8822 FAX: 03-353 8833</p>	<p>HMA HERA-OT - WELSHEN ARCHITECTURE LTD NEW PRACTICE - WELLINGTON AUCKLAND - CHRISTCHURCH</p>	<p>ENGINEERING SPECIALIST STRUCTURAL WELDED STEELWORKERS LIMITED 100 WILSON STREET DUNEDIN</p>	<p>Navy Museum</p>	<p>Connecting up shed Proposed Plan</p>		<p>Sheet A220</p>	<p>Revision 1</p>
				<p>Job: 2020</p>			

© Navy Museum, 2020. All Rights Reserved. Connecting up Shed Ltd