

TORPEDO BAY
NAVY MUSEUM
MEDALS



Personnel and position
 This 1974 crew, commanded by Lieutenant Commander T. A. Hutchinson, who earned a Navy Distinguished Service Cross during the Battle of the River Plate.
 The small number of search vessels could not afford to search each other's positions. They usually coordinated combined operations.
 In addition, you can see the working platform, a British's last remaining, and a piece of the ship's hull that identified the vessel for the captured at sea. Attached to the hull is a government seal box, a Royal Navy government seal, and a small metal container that carried messages to a special back channel.



THE BATTLE OF RIVERPLATE

At 6.14am on 13 December, the *Graf Spee* was spotted. The German ship closed on the cruisers.

... off from the group to attack the *Graf Spee* on one flank, while *Albatros* and *Aster* closed on the other. The *Graf Spee* now had opponents on widely different bearings, and had to decide on which ship it would concentrate its main armament, which was housed in just 2 turrets.



EXETER HANDED

At 04.00, the *Exeter* was spotted by the *Graf Spee* and the *Albatros*. The *Exeter* was damaged by a salvo of shells from the *Graf Spee* and the *Albatros*. The *Exeter* was then abandoned and the crew was rescued by the *Albatros*.

The *Exeter* was the only ship to be captured by the *Graf Spee*. It was taken to the *Albatros* and then to the *Graf Spee*. The *Exeter* was then taken to the *Albatros* and then to the *Graf Spee*. The *Exeter* was then taken to the *Albatros* and then to the *Graf Spee*.

The *Exeter* was the only ship to be captured by the *Graf Spee*. It was taken to the *Albatros* and then to the *Graf Spee*. The *Exeter* was then taken to the *Albatros* and then to the *Graf Spee*. The *Exeter* was then taken to the *Albatros* and then to the *Graf Spee*.

ALBATROS AND SCHILLES FIGHT ON

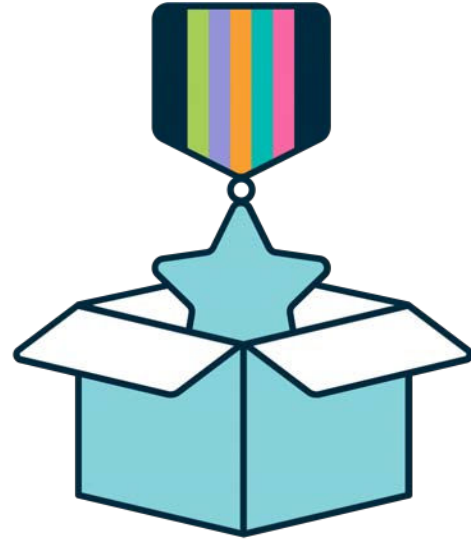
The *Albatros* and *Schilles* fought on until the *Graf Spee* was sunk. The *Albatros* was damaged by a salvo of shells from the *Graf Spee* and the *Schilles* was damaged by a salvo of shells from the *Graf Spee*.

The *Albatros* and *Schilles* fought on until the *Graf Spee* was sunk. The *Albatros* was damaged by a salvo of shells from the *Graf Spee* and the *Schilles* was damaged by a salvo of shells from the *Graf Spee*.





TORPEDO BAY
NAVY MUSEUM

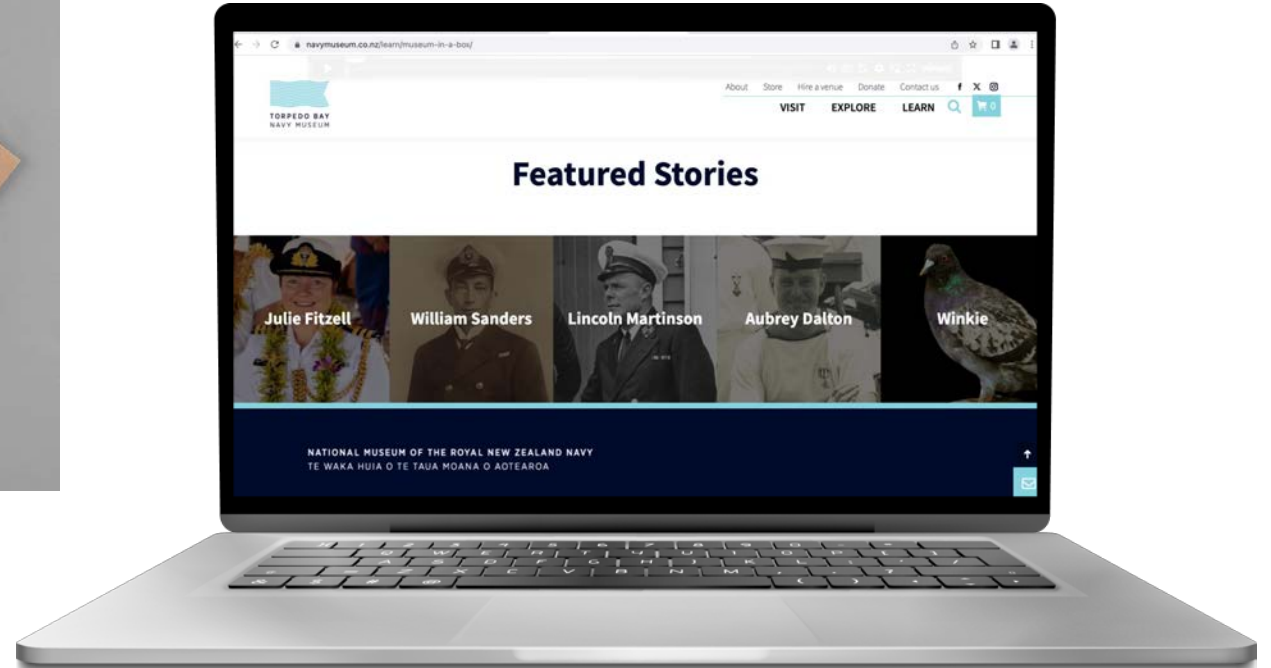


MUSEUM
IN A BOX

Phase One: Explore



<https://navymuseum.co.nz/learn/museum-in-a-box/>



Explore

Medals exhibition activity

MEDALS EXHIBITION

Curators create exhibitions by organising information into categories.

YOUR TASK

You've been given a collection of artefacts, or objects, about one person.

Find out more about those artefacts and sort them into themes to make an exhibition.

CATEGORIES

THE PERSON

The artefacts in this category tell us about the person's character, actions, or feelings.

THE MEDAL

The artefacts in this category tell us what the medal symbolises, or what it was awarded for.

THE COMMUNITY

The artefacts in this category tell us about other people involved, or the community or group this person belonged to.

EXPLORE

Recipient



EXPLORE

Recipient



EXPLORE MEDALS ICONS

Recipient

Medal

Cor



EXPLORE MEDALS I

Recipient

Medal

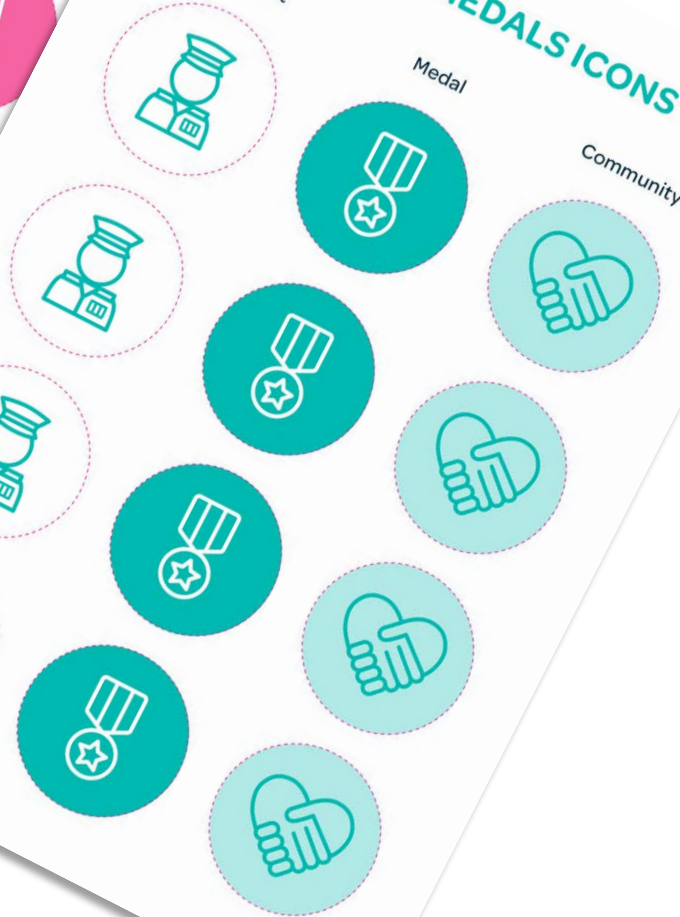


EXPLORE MEDALS ICONS

Recipient

Medal

Community





Missing artefacts!

